

NEW!



INFINITY DDE / DSE

After the models XR4 and XR6, the range of INFINITY pendants has been enlarged with two new models: DDE and DSE. These pendants have each light source with its own reflector and no more in the same one, as in the old models.

The double light source allows to take advantage of the complete light emission and to have a better and more homogeneous light in the tank.

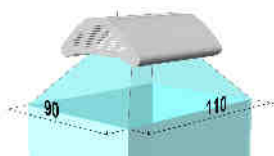
INFINITY DDE is ready to be used with external electronic ballasts or with the ACLS.



SFILIGOI s.r.l.
Via A. Magio 21 - 36061 Bassano del Grappa (VI) Italy
Phone | 39 0424 383375 - Fax | 39 0424 511487
e-mail: info@sfiligoit.it
<http://www.sfiligoit.it>

INNOVATIVE REFLECTOR

The double light sources allows to have a most powerful and strongest light inside the tank, thanks to this special reflector that has been studied in order to obtain a more homogeneous light



- homogeneous distribution of the light, on a surface of **90x110cm**



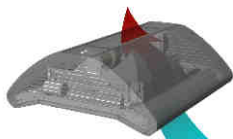
- the particular form of the reflector grants the lighting flow to be directed only into the aquarium tank, avoiding shocking for the spectator.

STABILITY



The external structure is made of painted aluminium which is ensured by an internal tough frame made of galvanized steel; that means the pendant is extremely stable and there is no metal dilatation.

NO FANS



Ventilation is granted by a "chimney effet system": two air intakes on the bottom and a pierced grill on the top let the air circulate through the lighting structure.

In this way there is no need to install fans and consequently the pendant is very silent while working.

COMPACT

Stability and natural good ventilation grant the possibility to include ferromagnetic reactors and electronic ballasts for T5 tubes without using external boxes.



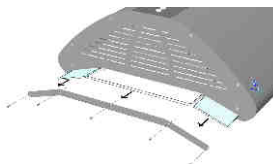
FORT5 TUBES

The reflector has been designed in a way to have housing for two T5 tubes on each side of the pendant, so to have four T5 at least on each model.

EASY MAINTENANCE



All electric and electronic components which require technical maintenance can be easily replaced just taking off one of the two sides of the lighting.



SUITABLE FOR ACLS INSTALLATION



Excellent performances of INFINITY DDE can be greatly exalted by installing the ACLS dimming system. ACLS version include blue moon leds which light is gradually increased by the system.

WIDE CHOICE OF HQI BULBS

INFINITY DDE can be provided with HQI bulbs of 150 W (Rx7s) and 250 W (Fc2), with colour temperatures from 6.000 °K to 20.000 °K.

INFINITY DSE can be provided with HQI bulbs of 175 W and 250 W only in single ended (E40), with colour temperatures from 6.000 °K to 20.000 °K.

MODELS FOR ALL REQUIREMENTS

Models available:

- Single : 2 x 150-250w (Rx7s-Fc2 / E40) + 4x24

- Double: 4 x 150-250w (Rx7s-Fc2 / E40) + 4x54w

- Triple: 6 x 150-250w (Rx7s-Fc2 / E40) + 8x39w

CODE	Model	Dimensions	HQI	T5 Tubes	With ACLS
SFDDE01	Infinity DDE 2x150 Rx7s	60x55cm	2x150 W	4x24 W	2 Leds BLU
SFDDE02	Infinity DDE 2x250 Fc2	60x55cm	2x250 W	4x24 W	2 Leds BLU
SFDDE03	Infinity DDE 4x150 Rx7s	120x55cm	4x150 W	4x54 W	2 Leds BLU
SFDDE04	Infinity DDE 4x250 Fc2	120x55cm	4x250 W	4x54 W	2 Leds BLU
SFDDE05	Infinity DDE 6x150 Rx7s	180x55cm	6x150 W	8x39 W	4 Leds BLU
SFDDE06	Infinity DDE 6x250 Fc2	180x55cm	6x250 W	8x39 W	4 Leds BLU
SFDSE01	Infinity DSE 2x250 E40	60x55cm	2x250 W	4x24 W	2 Leds BLU
SFDSE02	Infinity DSE 4x250 E40	120x55cm	4x250 W	4x54 W	2 Leds BLU
SFDSE03	Infinity DSE 6x250 E40	180x55cm	6x250 W	8x39 W	4 Leds BLU



SFILIGOI s.r.l.
Via A. Magio 21 - 36061 Bassano del Grappa (VI) Italy
Phone +39 0424 383375 - Fax +39 0424 511487
e-mail: info@sfiligoi.it
<http://www.sfiligoi.it>